

CTA AORTA

CT PE PULMONARY ANGIOGRAPHY

Vascular Window
Axial Plane

Vascular Window
Axial and Oblique Planes

CIRCULATION

1

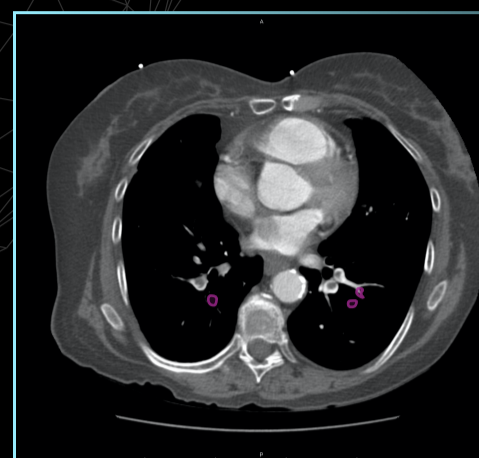
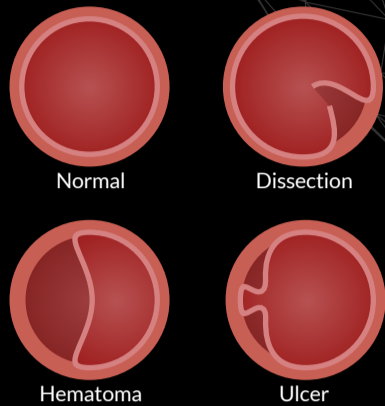
CIRCULATION

Look For:

- Aortic syndromes
 - Dissection
 - Intramural Hematoma
 - Penetrating atherosclerotic ulcer
- Central PE

Assess Quality:

- Ao > PA



Look For:

- Filling defects
- Commonly occur at branch points

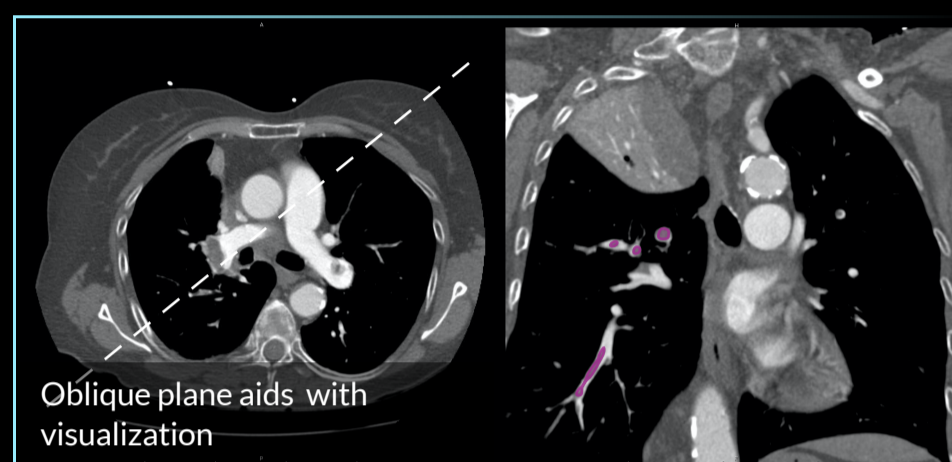
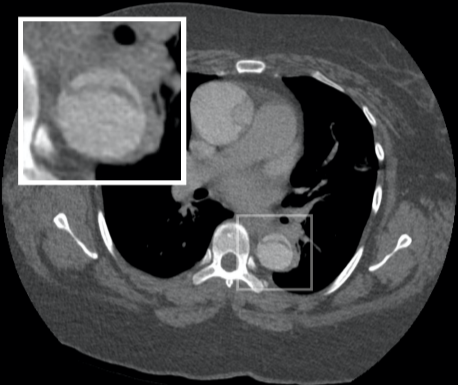
Assess Quality:

- PA > Ao
- PA > 20HU
- Contrast extends to subsegmental level

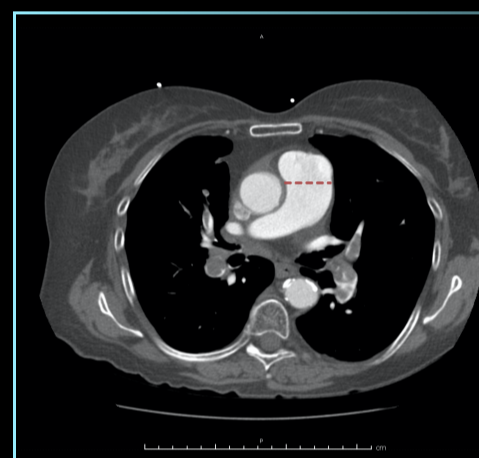
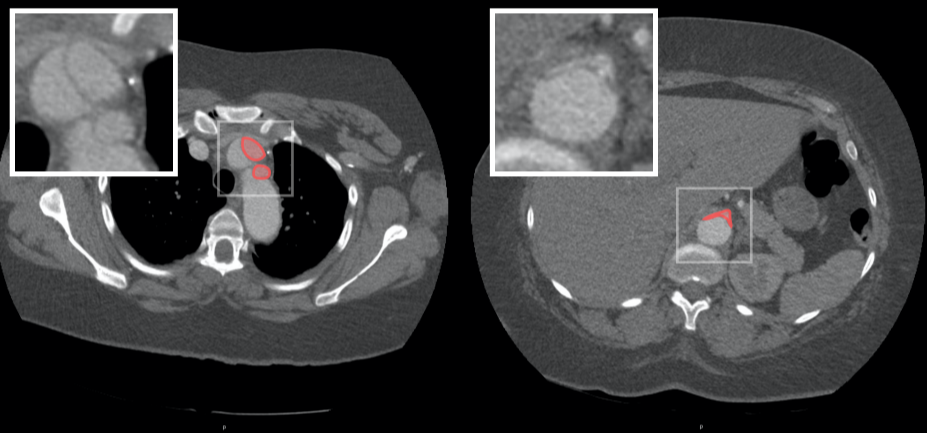
DISSECTION

Evaluate:

- Origin and extent: Stanford classification
 - A: Ascending Aorta
 - B: Beyond Brachiocephalic
- True lumen: smaller, more dense, originates at aortic root
- Complications: hematoma, active extravasation



COMPLICATIONS



Look For:

- PA root dilation >3cm
- Compare to prior imaging if available (chronic dilation suggests pulmonary hypertension)

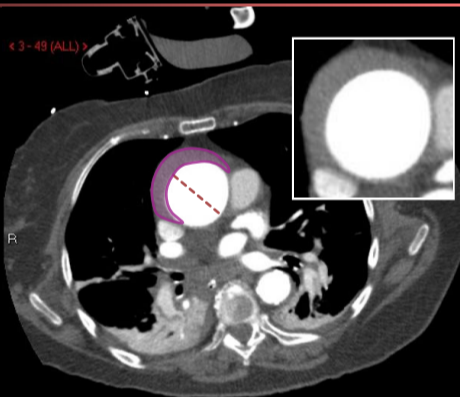
INTRAMURAL HEMATOMA

Look For:

- Crescent-shaped, low-attenuation relative to post-contrast aorta
- Precursor to aortic dissection

Aortic Root Dilation:

- Ectasia: 3.5-4.0cm
- Aneurysm: >4cm
- Rupture risk: >5cm



Look For:

- RV > LV
- Septal flattening/bowing
- Contrast reflux into hepatic veins

Note:

These findings correlate with POCUS evaluation (RV dilation, D-sign, dilated IVC)

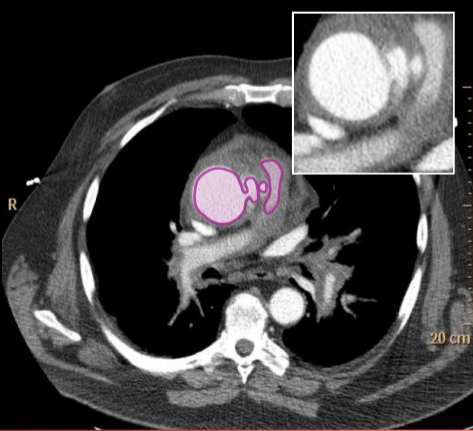
PENETRATING ATHEROSCLEROTIC ULCER

Look For:

- Contrast-filled outpouching
- May progress to perforation or dissection

Management:

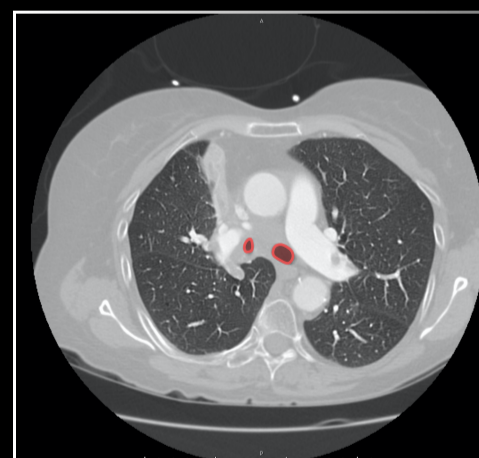
Shared across aortic syndromes, impulse control and surgical evaluation



Lung Window
Axial Plane

2

AIRWAY

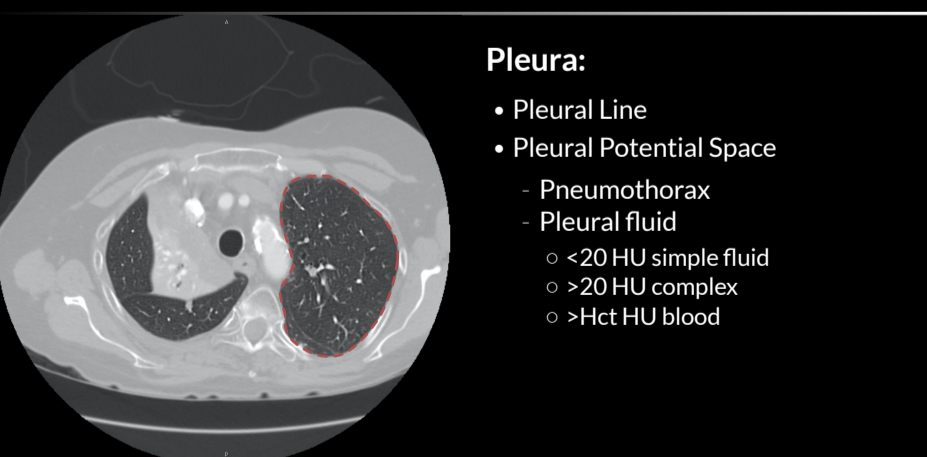


Look For:

- Patency of trachea and bronchi

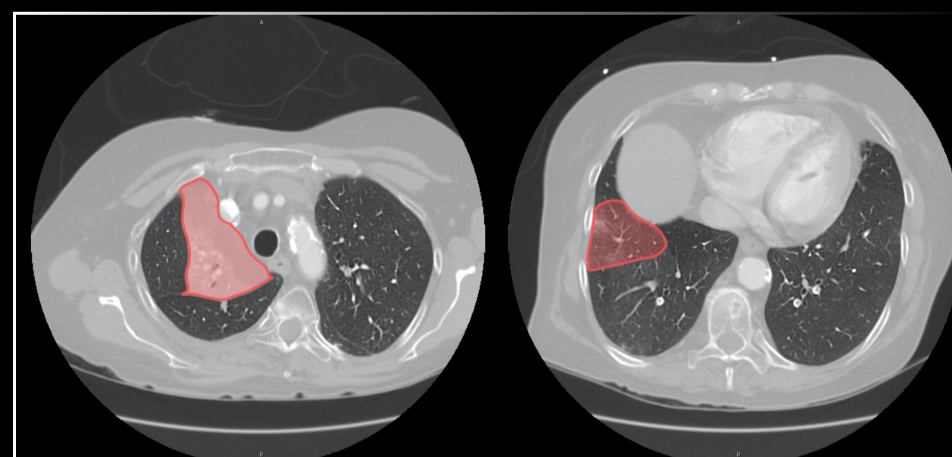
BREATHING

3



Pleura:

- Pleural Line
- Pleural Potential Space
 - Pneumothorax
 - Pleural fluid
 - o <20 HU simple fluid
 - o >20 HU complex
 - o >Hct HU blood



Parenchyma:

- Atelectasis
 - Enhancing (densely vascularized, not aerated)
 - Volume loss, tightly-packed vessels and bronchioles

Parenchyma:

- Consolidation
 - Non-enhancing (vascular shunting)
 - Normal architecture

MEDIASTINUM

4

SOFT-TISSUE

5

BONE

6

VISUALIZED UPPER ABDOMEN

7